



Une révolution pour l'agriculture indoor



Welcome
to the Future...

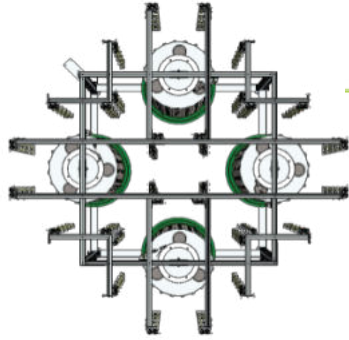
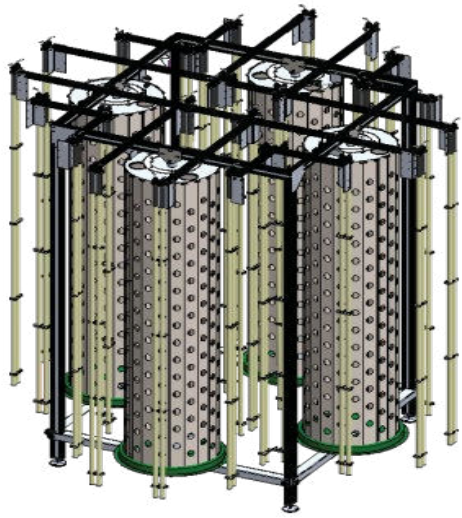




The technology



Une révolution pour l'agriculture indoor



Une unité = 4 Tourelles

9 m² / unité de culture

Hauteur : 265 cm

Diamètre : 60 cm

300 - 500 alvéoles / tourelle

133 - 200 plants / m²

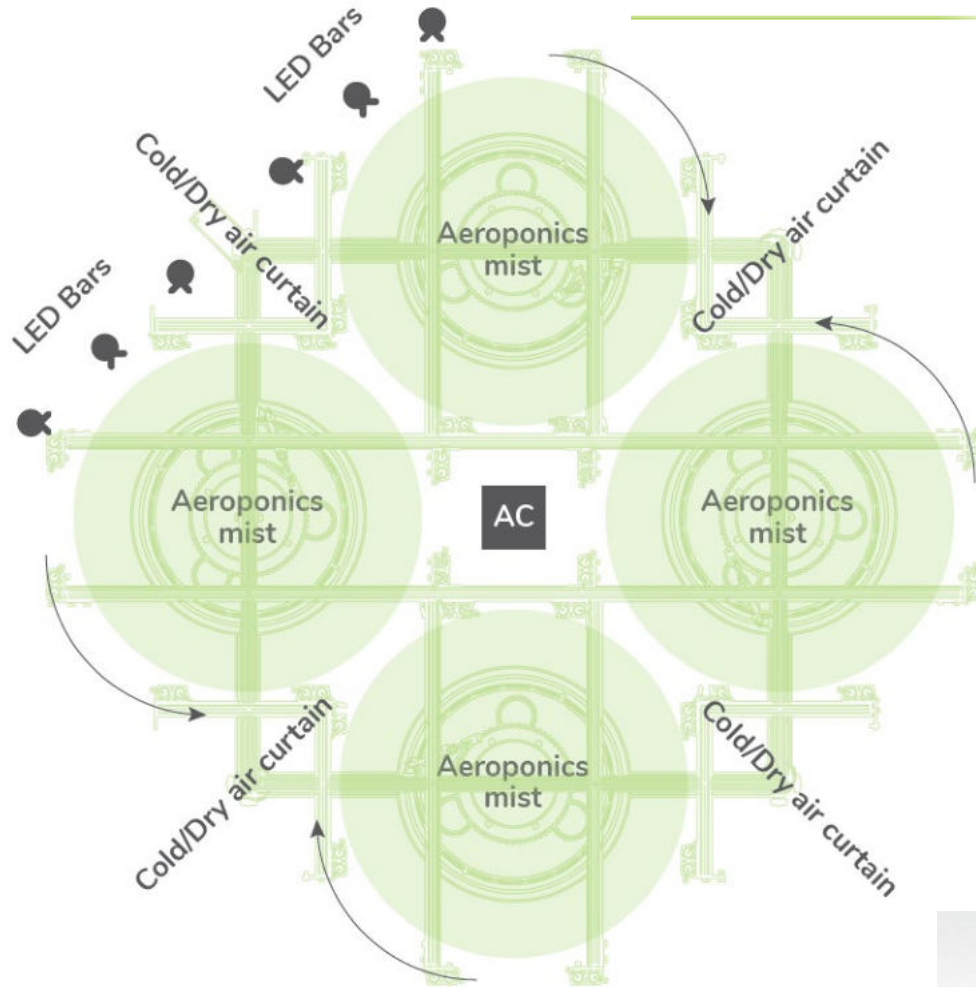


The technology



Une révolution pour l'agriculture indoor

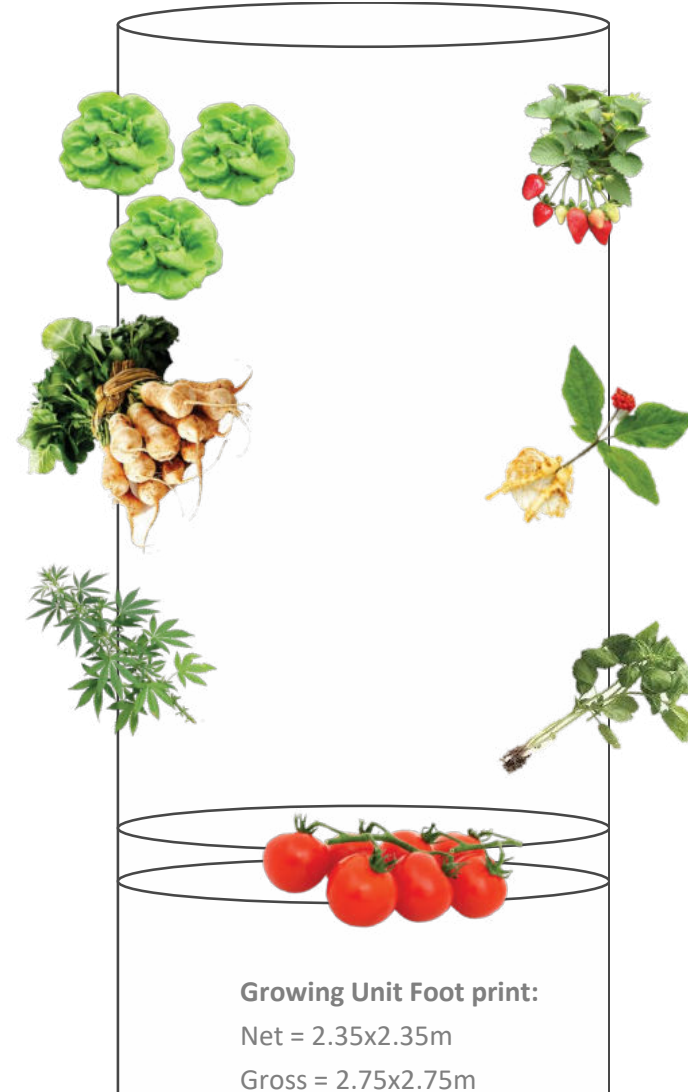
7 GROWING METHODS



Leafy greens

Tubers

Hemp / medicinal
cannabis



Strawberries

Roots –
Food / medicinal / Cosmetics

Herbs –
Food / medicinal / Cosmetics

Growing Unit Foot print:

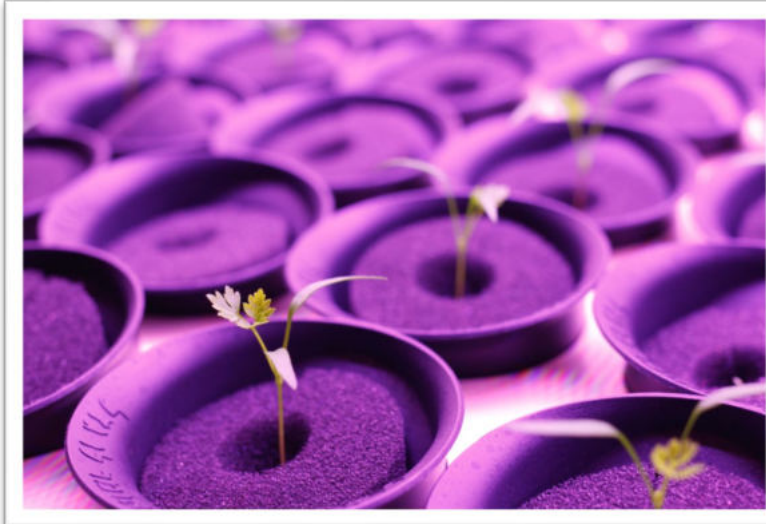
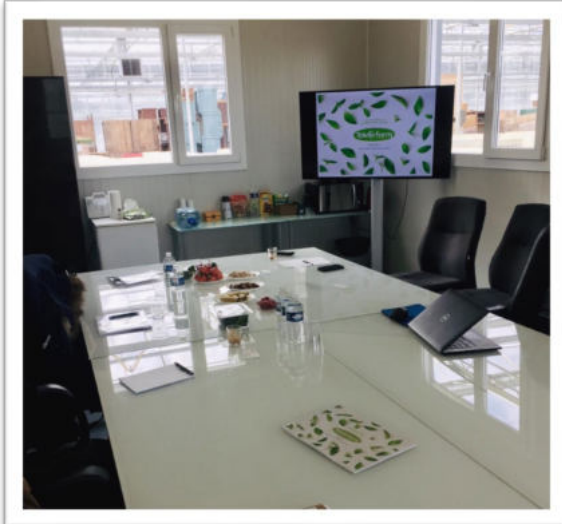
Net = 2.35x2.35m

Gross = 2.75x2.75m

The technology



Une révolution pour l'agriculture indoor



The required robotization

Harvesting from towers



Une révolution pour l'agriculture indoor



The required robotization Harvesting a variety of crops



Une révolution pour l'agriculture indoor



- **Concept of the harvesting mother technology suitable for vertical towers**
- **Declination of the mother technology to each family of plants**

Strawberries

Saffron

Aromatic Herbs

Baby leaves



A close-up photograph of fresh green basil leaves, showing their characteristic serrated edges and vibrant color. The leaves are densely packed and fill the entire frame. A white logo watermark is centered over the image, featuring a stylized leaf design. The text "Thank you for growing with us" is overlaid in white, sans-serif font, positioned horizontally across the middle of the image.

Thank you for growing with us